

LIT APPARATUS

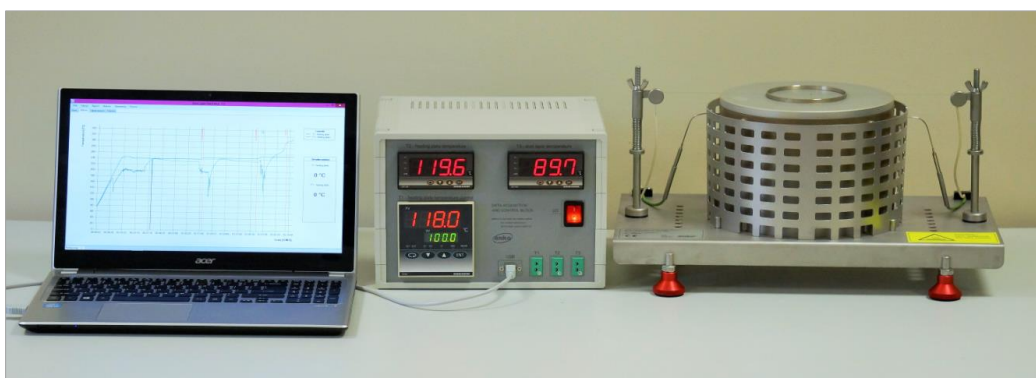
DETERMINATION OF THE MINIMUM
IGNITION TEMPERATURE OF A DUST LAYER

Model: LIT-3

ver. 3.0, 2016

STANDARD REFERENCES:

- EN 50281-2-1 : Methods for determining the minimum ignition temperatures of dust.
Method A: Dust layer on a heated surface at a constant temperature.
- ASTM E2021: Standard test method for hot-surface ignition temperature of dust layers.
- IEC 61241-2 replaced by ISO/IEC 80079-20-2:2016.
Electrical apparatus for use in the presence of combustible dust. Test methods: Methods for determining the minimum ignition temperatures of dust.
- ISO/IEC 80079-20-2:2016 Explosive atmospheres. Material characteristics. Combustible dusts test methods



HEATING PLATE BLOCK SPECIFICATION:

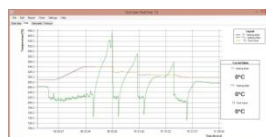
Heating plate unit	aluminum alloy corrosion protection
Body	stainless steel thermal protection
Heating plate thermocouples	type K Inconel shield silicone cables
Dust layer thermocouple	type K vertical adjustment
Dust rings	ø100 stainless steel 5mm, 12,5mm, 15mm other dimensions (optional)
Temperature	up to 400°C
Power supply	110 or 230VAC 800 VAC

CONTROL & DATA ACQUISITION BLOCK:

Heating plate controller	PID type
LED thermometer	dust layer heating plate
Data output	USB connection

ANKO ReqTemp® DATA ACQUISITION SOFTWARE:

Temperature registration	long periods
Sampling speed	user defined, from 1s
Data format	txt
On screen operation	enlargement of selected data
Printing	test report diagram printing
Data fields	sample description test description
Temperature Calibration	procedure available within software





HEATING PLATE TESTS INSTRUMENT:

- temperature gradient measurement on the heating plate
- stainless steel 650g weight
- stainless steel stand
- one thermocouple type K installed at the end of the glass rod



ACCESSORIES:

- Dust layer thermocouple, type K - 1 pcs.
- Paintbrush & spatula, accessories for cleaning.
- Glass rod - 1 piece.
- Dust rings - 5 pcs.
- Manuals : instruction/maintenance manual, installation guide

ADDITIONAL OPTIONS – TO BE QUOTED SEPARATELY:

- Thermometers with accuracy = 0,1%FS.
- Custom size dust rings.
- Additional type K thermocouples, for heating plate and dust layer.
- Thermocouple calibration, accredited laboratory certificate.
- PC computer - laptop or desktop. Recommend laptop, 17" screen.
- Training services and installation assistance on-site.

The specifications given in this document represents the state of engineering at the time of publishing. We reserve the right to make modifications to above specifications.

