

## MINOR 2

### DETERMINATION OF THE MINIMUM IGNITION ENERGY OF DUST/AIR MIXTURES

Model: MINOR 2.2

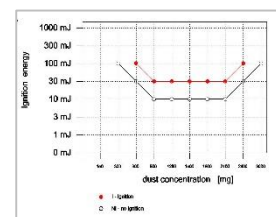
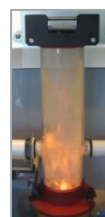
ver. 2.2, 2016

#### STANDARD REFERENCES:

- EN 13821 Potentially explosive atmospheres. Explosion prevention and protection. Determination of minimum ignition energy of dust/air mixtures
- ASTM E 2019: Standard Test Method for Minimum Ignition Energy of a Dust Cloud in Air
- IEC 61241-2-3 replaced by ISO/IEC 80079-20-2:2016.
- ISO/IEC 80079-20-2:2016 Explosive atmospheres. Material characteristics. Combustible dusts test methods

#### MINOR 2.2 SPECIFICATION:

Test vessel	Hartmann glass tube
Ignition time	delay range: 20-350 [ms]
Ignition time delay	real time measurement - from dust injection to spark ignition
Spark energy control	front panel adjustment
Electric connectors	gold plated
Energies:	1, 3, 10, 30, 100, 300, 1000 [mJ] 2000 (or 3000) mJ - optional
Dust injection pressure	front panel adjustment front panel readout
Body	stainless steel RAL 7040 powder coating other RAL colors available
Working modes:	ANKOdustMIE® software or manual mode
Dimensions: WxDxH	900 x 795 x 2418/2600 [mm] 35,5" x 31" x 95/102" [in]
Power:	maximum 800 W
Compressed air supply:	ø6mm, ø ¼", quick connector pressure 8-10 bar air filter installed front panel manometer
Mains:	230VAC or 110 VAC
Smoke extractor:	Built-in, fan speed control Outlet: ø100- ø150mm (4"-6")



## MINOR 2.2 UNIQUE FEATURES:

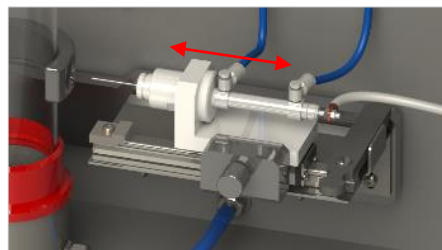
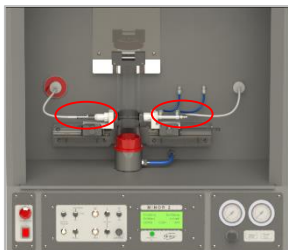
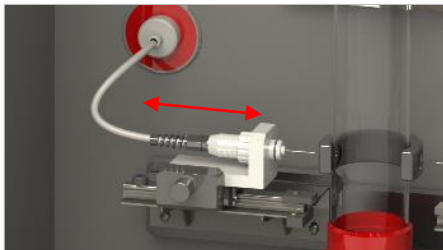


Extremely safe-in-operation fume-hood body.

MINOR 2.2 is designed as a one-piece device with built-in fume extractor and bottom cupboard. A fast opening front glass provides easy access to the working chamber.

The built-in strong fume extractor is connected to the ventilation system of the building.

Ventilation fan controller and lamp switch are installed in top front panel.



Fast in-operation HV electrodes. Substantially increased test speed.  
Quick and easy cleaning and glass replacement.



All necessary operations available on the front panel.

Direct real ignition time delay shown on the display.

## ACCESSORIES:

- Manuals: Instruction Manual, Installation Guide.
- Set of spare parts: Hartmann glass tube x2, gaskets and o-rings x 1 set (minimum 1 year), tungsten electrode x 10, set of flexible tubes x 1, spark gap adjustment rig x1 .
- Protective glasses, gloves – 1 set.
- Cleaning accessories – 1 set.

## AVAILABLE SERVICES:

- Calibration
- Training & Consultations via Internet
- Installation assistance, training on-site

The specifications given in this document represents the state of engineering at the time of publishing. We reserve the right to make modifications to above specifications.



ANKO · Tuzycka 10 · 03-683 Warsaw · Poland  
www.anko-lab.com · office@anko-lab.com · tel. : + 48 22 619 29 88